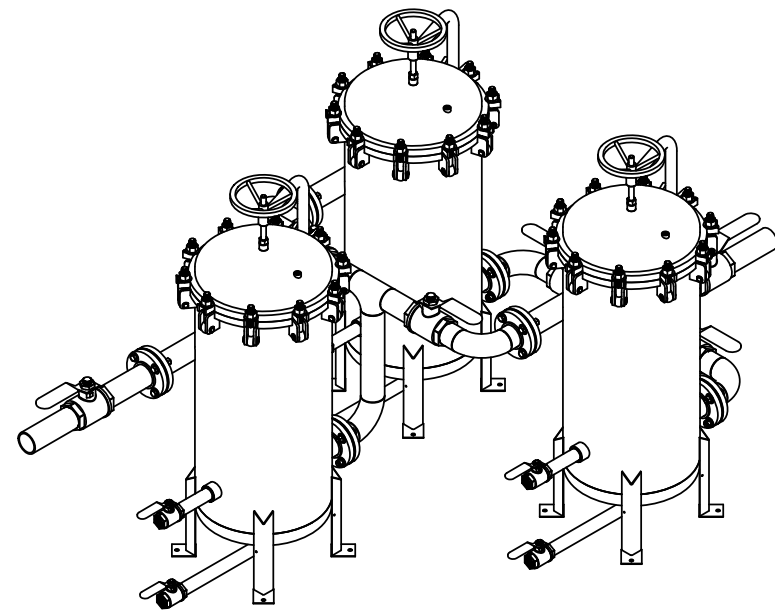
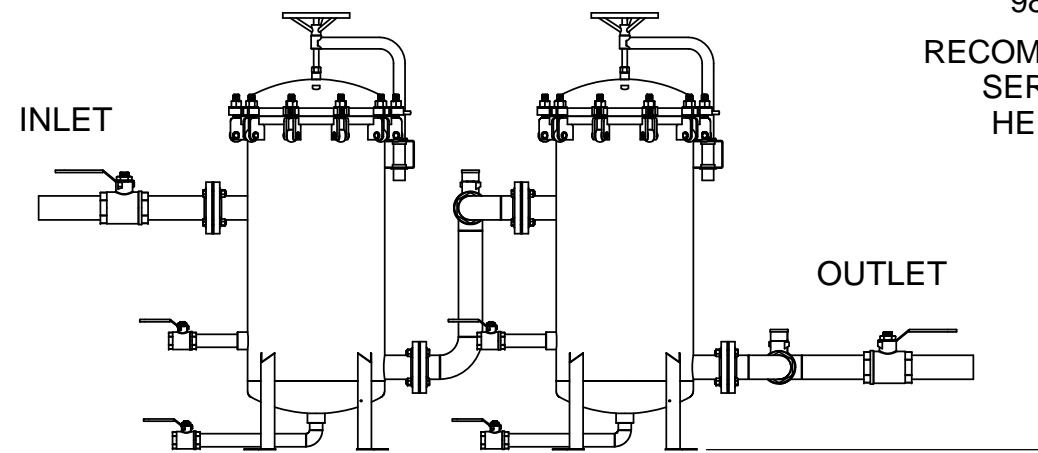
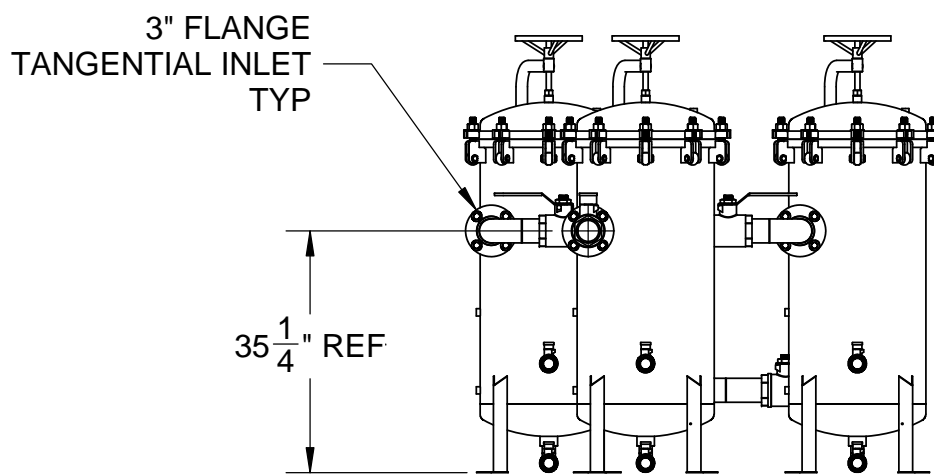
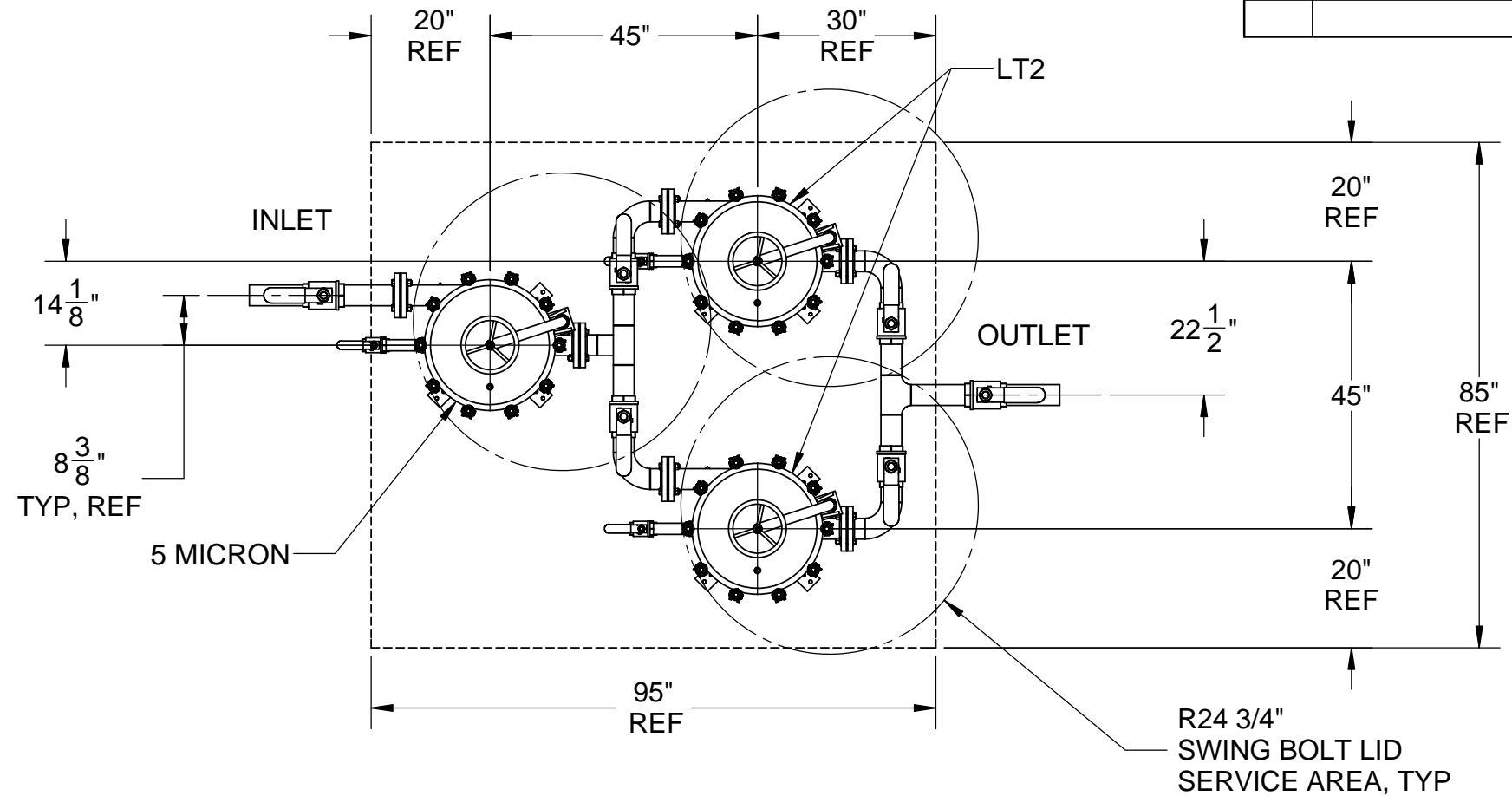


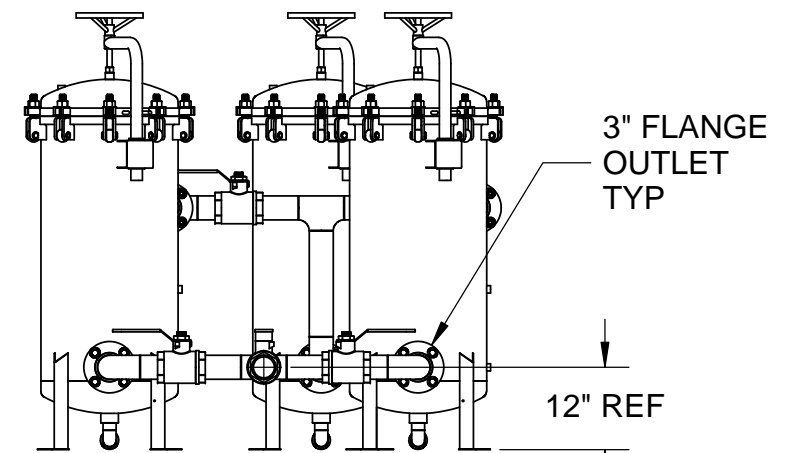
| REVISIONS |             |      |          |
|-----------|-------------|------|----------|
| REV.      | DESCRIPTION | DATE | APPROVED |
|           |             |      |          |
|           |             |      |          |



ISOMETRIC VIEW



98 1/2"  
RECOMMENDED  
SERVICE  
HEIGHT



|   |          |         |
|---|----------|---------|
| APPROVALS   |          | DATE    |
| DRAWN   | RS       | 11-4-14 |
| APPROVED  |          |         |
| UNLESS OTHERWISE SPECIFIED<br>DIMENSIONS ARE IN INCHES<br>TOLERANCES ARE: |          |         |
| FRACTIONS   | DECIMALS | ANGLES  |
| +/- 1/32  | +/- .010 | +/- 30' |
| DRAWN ON CAD DO NOT SCALE   |          |         |

**HARMSCO INC.**

P.O. BOX 14066 N. PALM BEACH, FL

SCALE  
"1:28"

2 STAGE, 5 MIC QTY 1  
BY LT2 QTY 2,  
HUR 3X170FL-XP,  
QTY 3 TOTAL

PART NO.  
N/A